

## **Regional Stormwater Detention Sites Within Future Growth Areas**

March 17, 2020

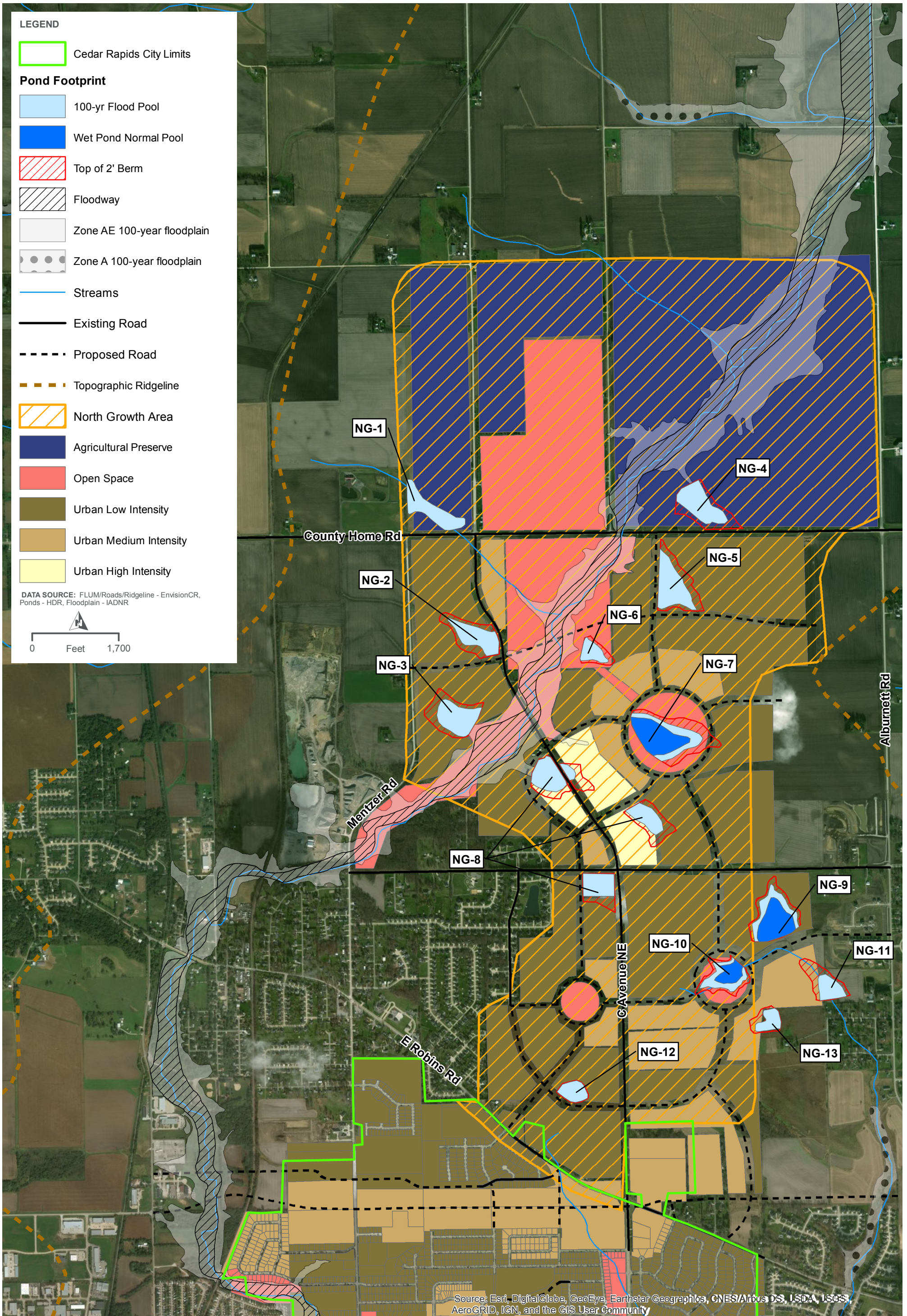
The following pages identify sites which would lend themselves well to regional stormwater detention. The City of Cedar Rapids may be willing to partner with developers to construct a regional stormwater detention facility depending on various factors (timing, cost-share, future growth, etc.).

Up to now, regional stormwater detention has not been feasible for the City to implement due to high up-front costs and the City having greater stormwater needs elsewhere. In general, some factors that would increase the likelihood of City participation in a regional stormwater detention project would be:

- Existing flooding problems immediately downstream
- High likelihood of recovering costs from future development

If brought forward from the development community, possible joint projects between a developer and the City would be reviewed on a case-by-case basis.

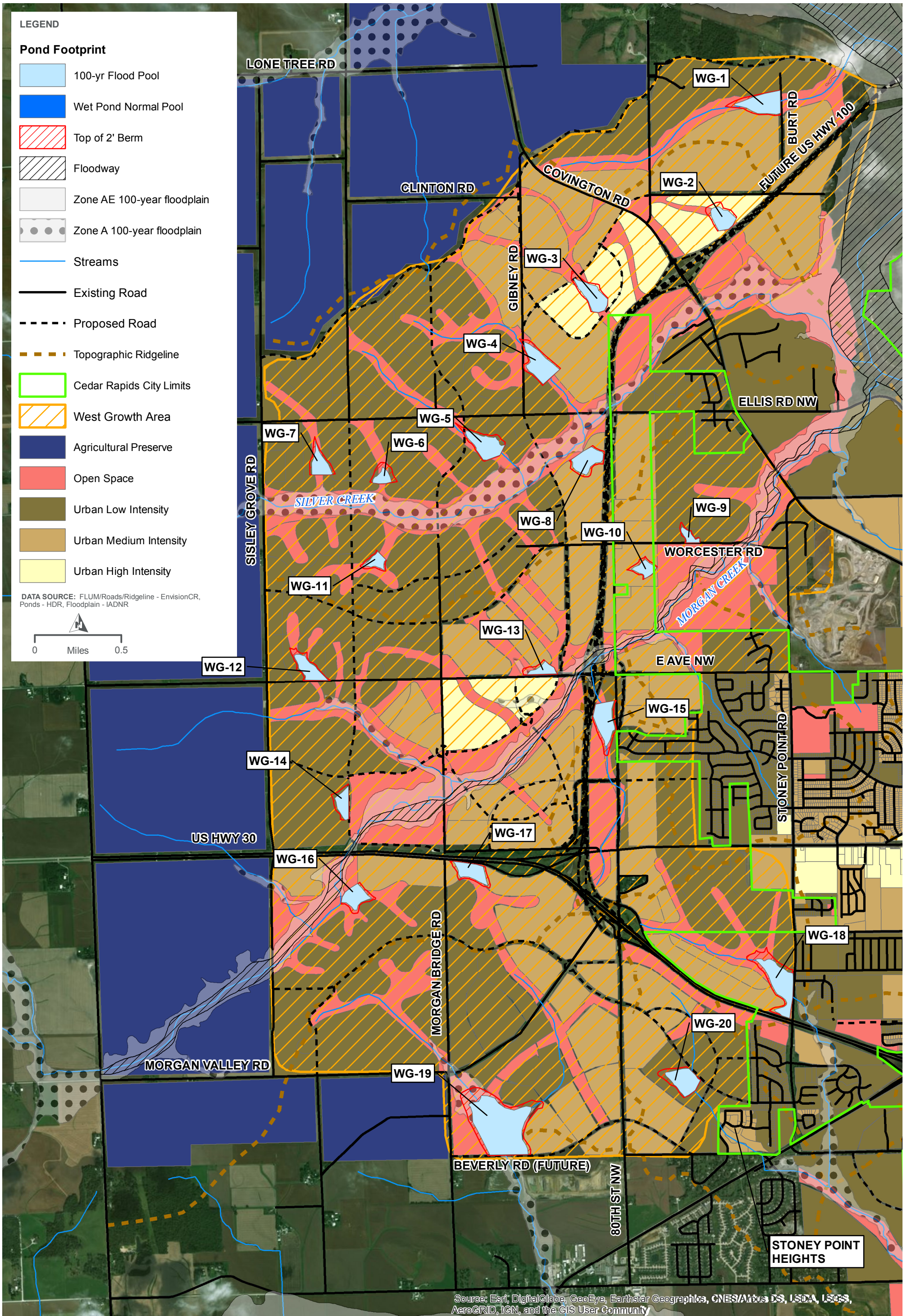




**FUTURE LAND USE MAP, FLOODPLAIN, AND POTENTIAL POND LOCATIONS  
NORTH GROWTH AREA SERVICE PLAN**

**FIGURE A-6**



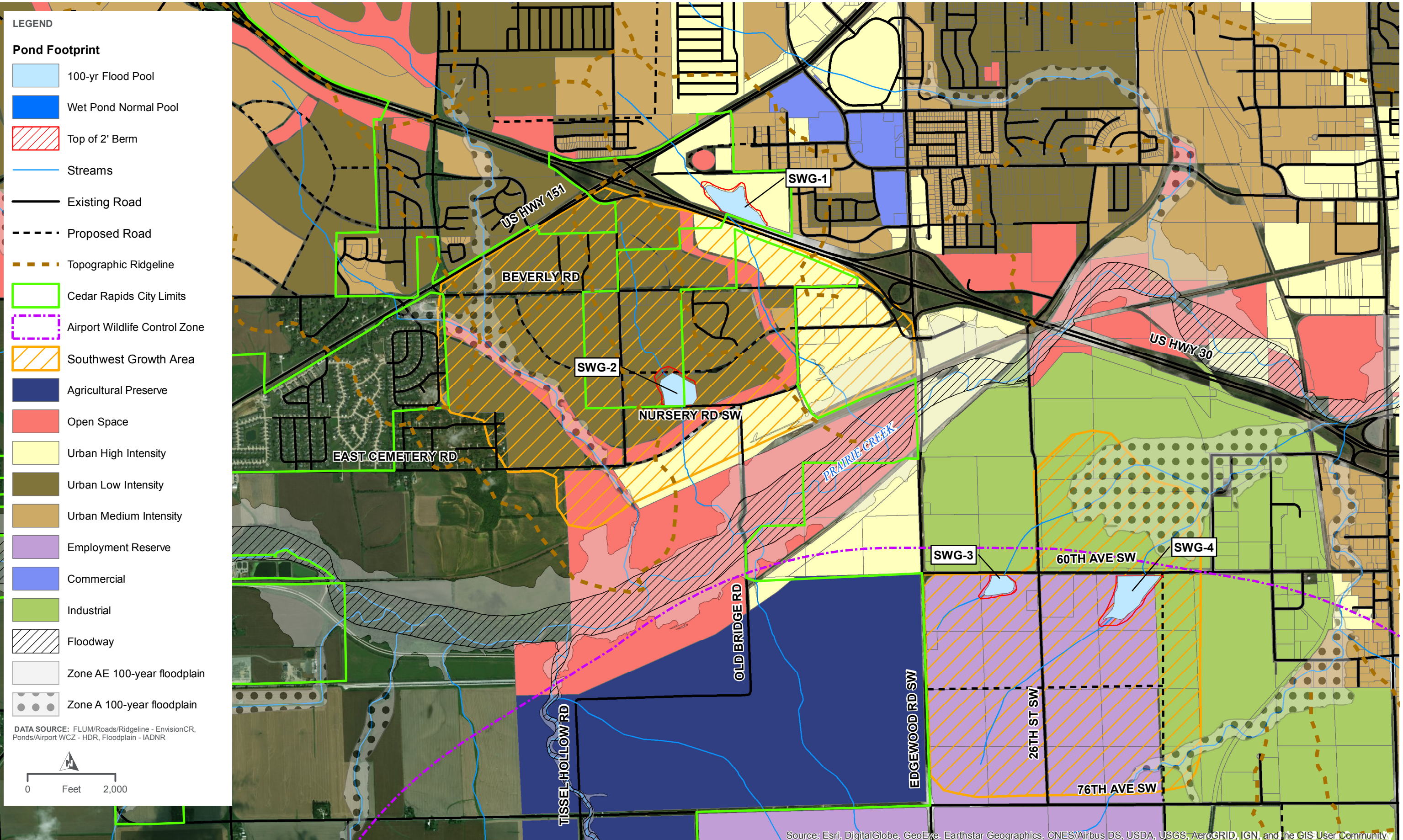


Source: Esri, DigitalGlobe, GeoEye, Earthstar Geographics, CNES/Airbus DS, USDA, USGS, AeroGRID, IGN, and the GIS User Community

**FUTURE LAND USE MAP, FLOODPLAIN, AND POTENTIAL POND LOCATIONS  
WEST GROWTH AREA SERVICE PLAN**

**FIGURE A-4**





**LEGEND**

**Pond Footprint**

- 100-yr Flood Pool
- Wet Pond Normal Pool
- Top of 2' Berm
- Streams
- Existing Road
- Proposed Road
- Topographic Ridgeline
- Cedar Rapids City Limits
- Airport Wildlife Control Zone
- Southwest Growth Area
- Agricultural Preserve
- Open Space
- Urban High Intensity
- Urban Low Intensity
- Urban Medium Intensity
- Employment Reserve
- Commercial
- Industrial
- Floodway
- Zone AE 100-year floodplain
- Zone A 100-year floodplain

**DATA SOURCE:** FLUM/Roads/Ridgeline - EnvisionCR, Ponds/Airport WCZ - HDR, Floodplain - IADNR

0 Feet 2,000

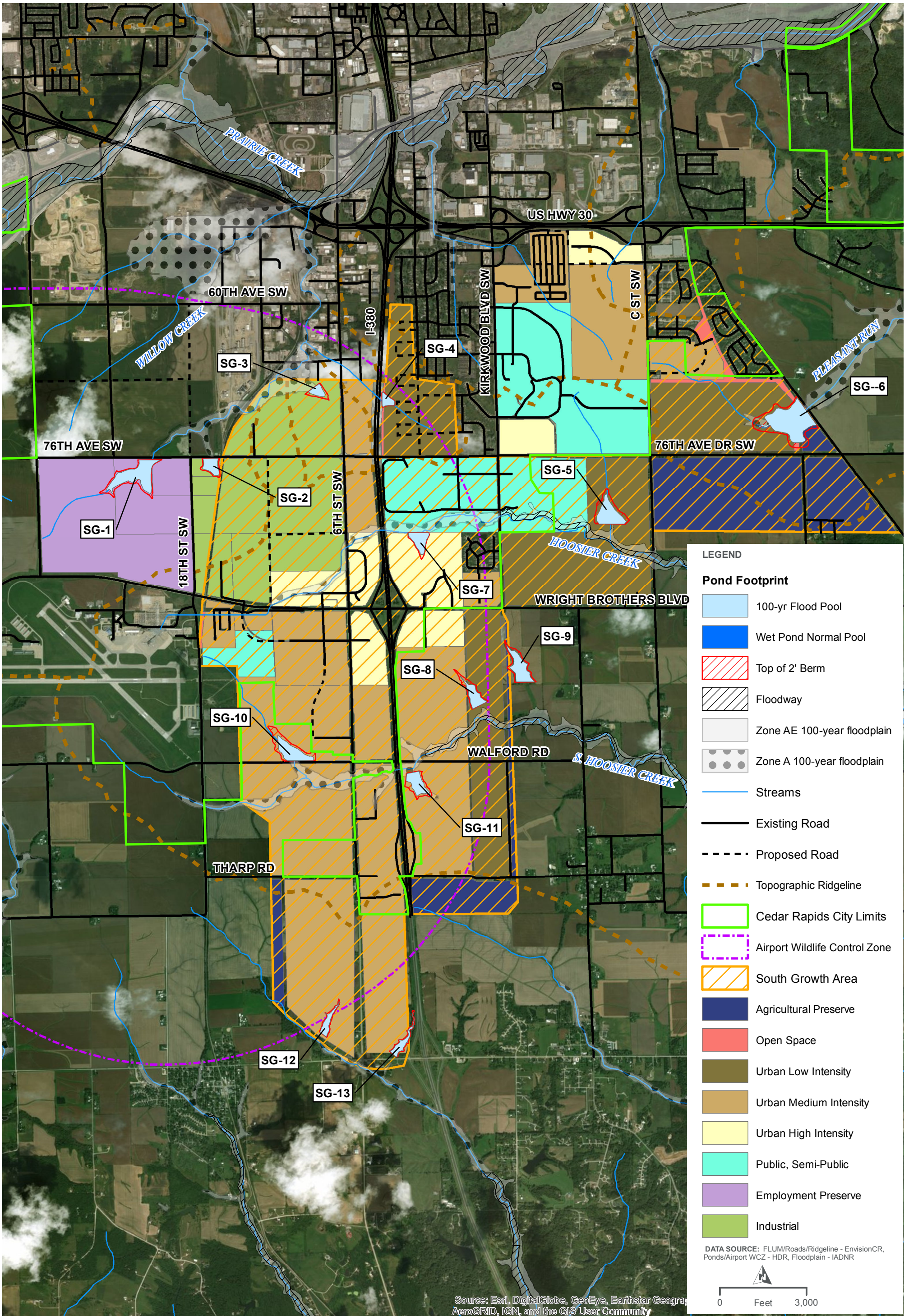
Source: Esri, DigitalGlobe, GeoEye, Earthstar Geographics, CNES/Airbus DS, USDA, USGS, AeroGRID, IGN, and the GIS User Community

**FUTURE LAND USE MAP, FLOODPLAIN, AND POTENTIAL POND LOCATIONS**  
**SOUTHWEST GROWTH AREA SERVICE PLAN**

FIGURE A-4







FUTURE LAND USE MAP, FLOODPLAIN, AND POTENTIAL POND LOCATIONS  
SOUTH GROWTH AREA SERVICE PLAN

FIGURE A-4